



Creativity Paths Consultants

Epicenter of:

- Project Monitoring
- Project Management Consultancy
- Construction Manager
- Contract Management
- Construction Supervision Consultancy
- Planning, Designing and Engineering Services
- Cost Consultancy
- Health, Safety and Environment (HS&E)
- Claim Management and its Advisory Services
- Project Procedures and Plan





Chairman Message

Creativity Paths Engineering Consulting (Creativity Paths) has a sole objective to efficiently provide the international standard and state-of-the-art Consultancy Services in the field of Project Monitoring, Engineering, Designing, Project Management, Contract Management, Cost Consultancy, Health, Safety & Environment (HS&E), Claim Management & its Advisory Services, Project Procedures and Plans as these are the crucial sectors and have decisive role for successful completion of the projects

Creativity Paths has a competent team of comprehensive experienced professionals and specialists, who shall proficiently undertake and complete the aforementioned consultancy services.

Since its establishment in 2011, Creativity Paths has successfully completed many projects, thus, it has many clients. Details of all these are provided in the subsequent sections of this Profile and its Website.

In view of competence and experience of Creativity Paths, as the Head of the organization, I certainly commit to all the concerns that my firm shall commence and complete all the consultancy services as stipulated in this profile with absolute professionalism for the ultimate satisfaction of all the concerned parties.

Engr. Mohammed Al Mymuni
Chairman
Creativity Paths Engineering Consulting

Vision and Mission



Creativity Paths is committed to serve its valued Clients competently to achieve the followings:

Provide top class and globally recognized the consultancy services as listed in the subsequent sections of this profile.

Deploy adequately qualified professionals and specialists for orderly commencement and completion of the projects/tasks.

At all times keeping the projects on track (free from discrepancies/lapses) to complete them within time and budget.

Domains of Creativity Paths

Creativity Paths is possessing absolute command, proficient expertise and experience to provide the listed below Consultancy Services to its valued Clients:

Project Monitoring



Creativity Paths has exclusive and comprehensive experienced experts in the specialized and unique Consultancy Services of "Project Monitoring" and the team has successfully completed many mega projects worth of multi Billion SAR. Therefore, it is firmly assured that Creativity Paths is highly capable to perform monitoring services for commencement, execution and completion of Projects within time and budget. Project Monitoring Services of Creativity Paths shall be enormously beneficial for the Clients, who shall engage these Services.



a. Creativity Paths' Project Monitoring Services are broadly classified into the following categories:

i. New Construction Projects for Banks and Real Estate Developers (as the Lenders/investors) and to the Project Owners to ensure orderly commencement, prosecution and completion of the projects.

ii. Due Diligence of Project Site, Project Documents and Key Stakeholders' competence and this shall enable to take decision for the required remedial actions to safeguard their investments in the project.

Further, the outcome of Due Diligence, shall make the investors familiar with the shortcomings in the projects and alert them to go for the investment in the project or not.

iii. **Operation and Maintenance (O&M) or Facilities Management** of mega Facilities such as Airports, Malls, Group of Hotels, Hospitals, Commercial Buildings, etc. to monitor to ensure that the functional stakeholders (Operator of O&M, O&M Contractors, Facilities Management Consultants, etc.) to perform their contractual obligations efficiently.



- b. Creativity Paths pledge to its valued Clients to undertake and execute all the required Project Monitoring Elements and the notable of them are:**
- i. Monitors for correctly and completely preparation and implementation of all the Project Documents (Work Schedules, Drawings, Plans, Manuals, etc.) including all Contracts & Agreements.
 - ii. Ensure sourcing & engaging of competent functional stakeholders (Consultants, Contractors, Subcontractors, Suppliers, etc.).
 - iii. Make sure orderly mobilization of the project's Functional Stakeholders such as Consultants, Contractors, Suppliers and Owners of the Project.

- iv. Monitoring of all the construction proceedings i. e. Risk and Quality Control, implementation of all HS&E's requirements, Contractual Rights and Obligations, Non-Conformance Reports (NCRs), correct Progress Billings, Testing & Commissioning (T&C) and timely accomplishment of intermediate and final Milestones.
- v. Monitor to mitigate all the obstacles at the Project Site in timely manner.
- vi. Ensure that all the functional stakeholders are performing efficiently and provide recommendations as deemed necessary.
- vii. Keep the project on track at all times, avoidance of undue cost and delays i. e. timely completion within the budget.
- viii. The vital part is that Creativity Paths shall perform Project Monitoring Services with a very limited professionals at the project site and other required services shall be undertaken by its Home Office, thus, the Project Monitoring of Creativity Paths shall be extremely economical to the Client.



Creativity Paths plays a multilateral role in a Project Management and provide value added services from the Concept of Project Phase until its completion and the listed below are our some of the salient objectives:



- a. Efficiently manage project according to the client's objectives and create win-win situation according to their requirements.
- b. Establish real values and they shall be clearly visible at every stage.
- c. Confirms for functional and financially viable project finished within timeline and in agreed cost and in line with the best quality.
- d. Minimizing the risks and adding value to the projects through our comprehensive knowledge and experience.
- e. Emphasis on management in accordance to client's requirements by preparation of budget, scheduling, procurement, contracts and highlighting the risks.

-
- A circular inset image showing two men from behind, wearing orange hard hats and business attire (a suit and a button-down shirt). They are holding and looking at large blueprints. The man on the left is holding a blue pen. They are standing in front of a modern building with a glass and steel facade.

- xi. Preliminary & Final Handing-over and Taking-over of the Completed Work.
- xii. One (1) year Operation & Maintenance (O&M) after Preliminary Taking-over of the Project, Close-out of the Contract(s) and Demobilization of the functional stakeholders - contractors, subcontractors, consultants and suppliers.



Construction Manager (CM)

The Scope of Construction Manager (CM) is the combined services of the Project Management Consultant (PMC) and the Construction Supervision Consultant (CSC), Creativity Paths is possessing all the required competence to undertake and successfully complete the Services of the CM. Some of the notable salient objectives of our CM services are:

a. Project Management & Administration

In this category, the following are the salient objective of our services:

- i. Mobilization and Demobilization of the Functional Stakeholders.
- ii. Construction Phasing & Sequencing.
- iii. Construction Staging and Laydown.
- iv. Enabling and Preparatory Works.
- v. Emergency Response.
- vi. Safety and Security.
- vii. Logistics and Quality Control.

b. Construction Management Services

In Construction Management, the core elements are but not limited to the followings:

- i. Contracts' Management.
- ii. Planning and Scheduling.
- iii. Quantity Surveying.
- iv. Surveying.
- v. Project Control.
- vi. Production Control.
- vii. Inspection, Quality and Non-Conformance Reports (NCRs) Control.
- viii. Costs, Claims and Payment to the Contractors and Consultants.
- ix. Materials' Testing, Factory Witness Tests and Testing during Services.

- x. Preliminary and Final Taking Over of the Completed works.
- xi. Operation & Maintenance (O&M)/Defect Liability Period.

c. Technical and Engineering Services

- i. Advance Planning.
- ii. Pre-Construction Engineering.
- iii. Engineering during Construction.
- iv. Check-out and Testing.
- v. Technical Support.

Creativity Paths has experts' team of Legal and Contracts for Preparation, Review (as a third party) and Management of Complete Cycle (Tender stage thru close-out of the Contract) of international standard Contracts including Fédération Internationale Des Ingénieurs-Conseils/FIDIC (International Federation of Consulting Engineers) based Contracts. The type of Contracts, we shall undertake for their drafting and review are but not limited to the followings:



- a. Design and Engineering Services' Agreement.
- b. All type of Construction Contracts.
- c. Project Monitoring Agreement.
- d. Common Term Agreement (between the Lenders/Banks & Project Owners).
- e. Operation and Maintenance (O&M) Agreement.
- f. Renovation and Upgrading Contracts.
- g. Project Management Consultancy (PMC) Agreement.
- h. Construction Manager (CM) Agreement.
- i. Construction Supervision Consultant (CSC) Agreement.
- j. Cost Consultancy Agreement.
- k. Facilities Management Agreement, etc.

Note: Our drafted or reviewed (as a third party) Contract Documents shall be perfect, clear and complete i. e. they shall be free from ambiguities, errors and omissions.

Construction Supervision Consultant (CSC)

Creativity Paths firmly assured its valued Clients that it shall diligently supervise to commence, execute and complete project on time, within budget, with the required quality as per the approved specifications and implementation of all the Contractual rights & obligations and the measures of HS&E.



The core elements of CSC Services by Creativity Paths shall be but not limited to the following:

- a. Deployment of experienced and competent staff.
- b. Efficient mobilization and performance of Contractors, Subcontractors and Suppliers.
- c. Orderly commencement and completion of all the construction activities.
- d. Implementation of Contracts to orderly accomplish all the contractual rights and obligations.
- e. Ensure correctly and timely processing of the Contractor's Progress Billings.
- f. Timely completion of Non-Conformance Reports (NCRs).
- g. Efficiently carry-out Testing & Commissioning (T&C).
- h. Timely Completion of Project and orderly Close-out of the Contract.



Creativity Paths has Joint Venture (JV) Agreement with a leading firm, Sabri Pasayigit (SP) Architects, Istanbul, Turkey and for details, please visit its website: <https://spdo.com.tr> . Thus, we are capable to undertake any magnitude and complex project of Planning, Designing and Engineering Services of Airports, Hospitality, Commercial Buildings (Malls, Office Buildings, Hospitals, Schools, Warehouses, etc.), Mosques, etc. by taking into account all the service requirements of the Clients.



As per the requirement of the Clients, we undertake the projects of Planning, Designing and Engineering Services described hereinbelow and they shall encompass all their stages, components, documents, drawings and construction packages to be issued for tendering. The broad division of the Creativity Paths Services in this category are:

a. Master Planning

Our JV Partner, SP Architects is a leading Architect firm in Turkey and Europe for their Master Planning completed projects, please visit the above-mentioned website. Thus, we as a local content and in association our Partner's technical know-how and vast experience of mega and iconic projects we can efficiently undertake and complete Master Planning Scope of Services to long-term vibrant planning to conceptual framework to drive project development and growth. Our Master Plans' services shall cover all the required elements such as but not limited to the following:

- i. All the required Goals with the Policies.
- ii. Efficient Usage of the allocated Land area.
- iii. All the requirements (Housing, Commercial, Hotels, Mall, Hospitals, Stadiums, etc.).
- iv. Economic Development.
- v. Natural and Cultural Resources – Historic, Environmental, etc.
- vi. Open Spaces, Gardens/Parks, Recreations, etc.
- vii. Public Services – Facilities, Utilities, Infrastructures (Schools, Libraries, Water Treatment Plants, Sewer Treatment Plants, Solid and Liquid Waste Management, Public Offices – Police Stations, Fire Stations, etc).
- viii. Traffic and Transportation, Pedestrian Mobility, etc.

b. Planning and Designing of Mega Projects – Airports, Railway Stations, Stadiums, etc.

Our JV Partner, is possessing the requisite competence and extensive experience in Planning and Designing of Airports, Railway Stations, Bus Stations, Stadiums, mass Luxurious Villas, etc. therefore, we can efficiently undertake and complete Planning and Designing of all such specialized and major facilities and utilities.

c. Designing and Engineering

We shall provide complete Designing and Engineering Services for projects are but not limited to the following:

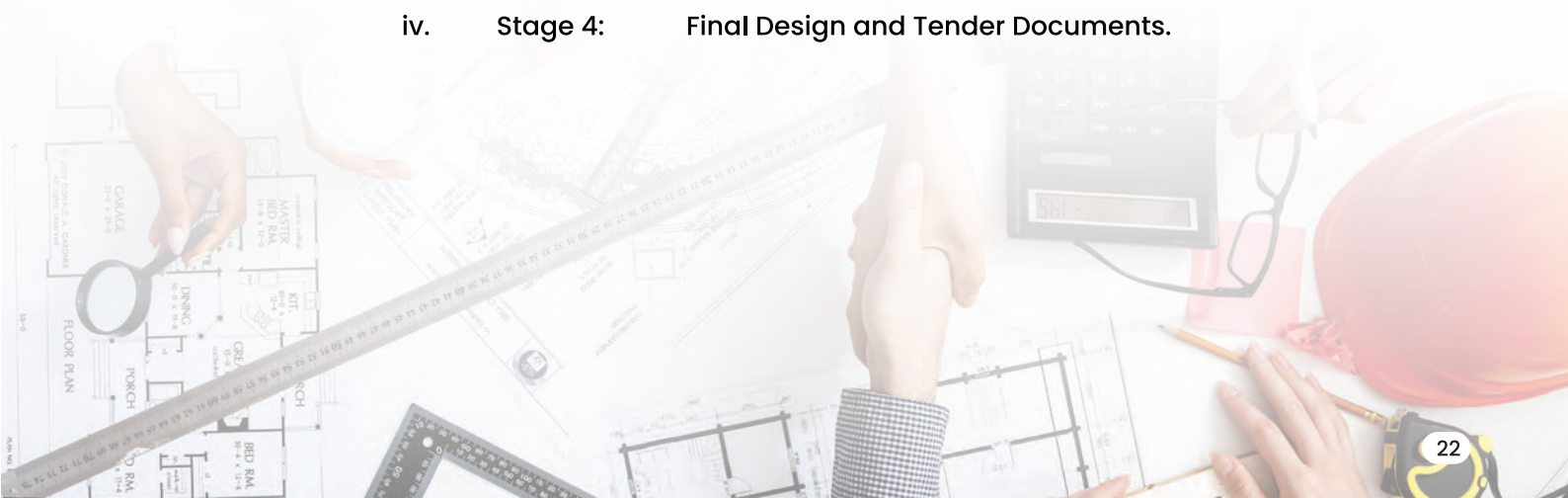
- i. Architectural.
- ii. Interior Design.
- iii. Way Finding and Signage.
- iv. Civil and Structural Engineering.
- v. Mechanical Engineering.
- vi. Electrical Engineering including Information Technology (IT).
- vii. Chemical Engineering.

- viii. Environmental Engineering.
- ix. Geotechnical Engineering.
- x. Industrial Engineering.
- xi. Transportation and Roads Engineering.
- xii. Medical Equipment Engineering.
- xiii. Materials Engineering.
- xiv. Vehicular Traffic Studies.
- xv. Landscape and Hardscape.
- xvi. Utilities (Dry and Wet).
- xvii. Information Technology (IT).
- xviii. Support Facilities.
- xix. Special Systems.
- xx. Quantity Surveying.
- xxi. Construction Packages.

d. Stages of Planning and Designing Services

Creativity Paths shall discharge the aforementioned Services in accordance with the following stages:

- i. Stage 1: Data Collection & Consolidation, Preparatory Works and Concept Design.
- ii. Stage 2: Schematic Design.
- iii. Stage 3: Design Development.
- iv. Stage 4: Final Design and Tender Documents.



a. Claim Management

Along with the Contract Management, complementary Claim Management is also, a very important element. A Claim can be made by one contracting party to the other on the basis of contractual obligations and rights. The Claim Management shall facilitate that project goals can be achieved or exceeded in terms of completion of the Contract within Budget and its Completion Period.



b. Claim Advisory Services

If there any Claim perceives by any contracting party, Creativity shall undertake and perform an efficient assessment and submit a report about authenticity, legality and potentiality for soliciting the Claim request.

c. Competence of Creativity for Managing the Claims

The expert and well experienced legal and contract team of Creativity is well versed in all the renowned international and national Contracts and Conditions (Ref. above Contract Management), therefore, our team can efficiently manage all type of Contracts' Claims efficiently.

d. Criteria for the Claim Management and its Advisory Services

- i. Our experts shall assess the Claims' nature, authenticity in respect of its legality and viability in compliance with the Contract and other related Project Documents.
- ii. Perform Due Diligence of the Contracts and other Project's Documents to identify the relevant justifications in accordance with Contracts and other Project Documents as the basis for filing the Claims.
- iii. Prepares Due Diligence Report about the possibility and authenticity for filing the Claim Request and the chances of its success.
- iv. Presentation and negotiation of the Claim for resolution and its settlement.



a. What are Project Procedures?


The Project Procedures are sequential Plan of Actions that all stakeholders of the project should follow to carry out their tasks in orderly manner. They shall enable to prevent controversy in decision-making, and helps to decrease mismanagements.

b. Purpose and Importance of the Project Procedures

The core purpose and importance of the Project Procedures are but not limited to the following:

- i. Sequential actions for creation, review, approval and implementation of all the Project Documents.
- ii. The Project Stakeholders' performance review, rectification actions (as deemed necessary) and acceptance.
- iii. Handling project issues, defects and quality/scope change requests.
- iv. Security of project assets and confidentiality of project information and data.




- 
- v. Comprehensive and correct Project Procedures shall enable to avoid the following:
- Correct creation of Project Documents, their review, approval and implementation.
 - Avoidance of cost overruns, quality, rework and risk factors.
 - Abiding to laws, rules and regulations.
 - Keep all Project Proceedings in orderly manner for the project timely completion and within budget.

b. Proposed Project Procedures and Plans by Creativity

We shall draft clear and complete all the required Project Procedure to our valued clients for their projects and notable topic of the Procedures are but not limited to the following:

- i. Project Control Procedure.
- ii. Documents' Control Procedure.
- iii. Monthly Progress Billing Procedure.
- iv. Cost Procedure.
- v. Engineering and Technical Procedures.
- vi. Design Management Procedure.
- vii. Reports' (Daily, Weekly and Monthly) Procedures.
- viii. Product Verification Procedure.
- ix. Materials' Inspection Procedure.
- x. Tender Documents and Request for Proposal (RFP) Procedures.
- xi. Variation Order Procedure.
- xii. Claim Procedure.
- xiii. Request for Information (RFI) Procedure.



- 
- xiv. Meetings' Procedures.
 - xv. Inspection Request Procedures.
 - xvi. Non-Compliance Report (NCR) Procedure.
 - xvii. Quality Assurance Audit Procedure.
 - xviii. Construction Completion Documents' Procedure.
 - xix. Preliminary Handing-over of the Completed Work Procedure.
 - xx. Final Taking-over of the Completed Work Procedure.
 - xxi. Project Communication Plan.
 - xxii. Project Management Plan.
 - xxiii. Project Quality Plan.
 - xxiv. Health, Safety and Environment Plan.

a. Our core Elements of Cost Consultancy Services are but not limited to the following:

- i. Performs initial feasibility and formulate budget of a project.
- ii. Ensure and manage the cost and scope of designs to stay within budget.
- iii. Oversee the construction works are progressing and remaining within budget at all times.



b. Cost Experts are:

- i. Our professional and experts' Cost Consultancy team, assess, understand, manage and report accurately on costs and shall add value at the early stages and throughout a project lifecycle.
- ii. Always our team shall ensure that its valued Clients has cost certainty.
and their overall expenditure is kept as low as possible throughout each stage.
- iii. The cost-effective management is crucial in the successful delivery of a project; therefore, our team shall achieve, this critical task through robust cost planning and engaging with the market through supply chain at an early stage of the process.

c. Salient Features of our Comprehensive Cost Consultancy Services :

We evaluate our valued Clients' requirements and applying our expertise of construction costs, market trends and risk management and these shall achieve by accomplishing the following:

- i. High-Level Cost Strategies.
- ii. Efficient Cost Planning and Cost Modelling.
- iii. Effective Cash flow Forecasting.
- iv. Benchmarking and Market Testing.
- v. Feasibility Studies and Development Appraisals.

- vi. Efficient Negotiations with the Stakeholders.
- vii. Proper Procurement and Contract Management.
- viii. Cost Management (Change Control & Reporting, Final Account Negotiation and Settlement) of projects through out their lifecycle.
- ix. Whole Life Costing.
- x. Efficient Reinstatement Valuations.
- xi. Sustainability and Socio-Economic Cost Consultancy.



Health, Safety and Environment (HS&E)

“Safety is never an Accident; it is always the result of efficient implementation of perfect and complete knowledge with dedicated and intelligent Efforts.”



Creativity Paths is providing Health, Safety and Environment's (HS&E) Services in formulation of HS&E, Implementation of HS&E's Measures & Regulations at the Project Site and HS&E Training for the Project Personnel.

a. Devising of HS&E's Measures and Regulations

Creativity Paths shall undertake to devise HS&E in all areas of HS&E and the core elements are but not limited to the following:

- i. Public Safety and Fire Prevention.
- ii. Fire Alarm and Smoke Control Systems.
- iii. Safety and Fire Hazardous and Escape Routes Systems.
- iv. Firefighting Systems.

b. Implementation of HS&E's Measures & Regulations

- i. The prime aims of Creativity Paths about implementation of HS&E's Measures and Regulations are:
 - To eliminate hazardous work practices and conditions from the working and living areas of the projects
 - Ensure all the responsible stakeholders at the Project Site implementation of all the required Measures and Regulations of HS&E.



- ii. As a Third Party, Creativity Paths shall perform inspection of Project Sites to ensure effective implementation of all the required HS&E's standard policies and procedures:
- Review to ensure that the Stakeholders HS&E Programs are in accordance to the "Project Safety Manual".
 - Make sure all the responsible stakeholders (contractors and consultants) efficiently practicing all the required HS&E's regulations at the worksite and living areas.



**Safety and Health
at Work**



- Carry-out inspections to monitor that **all** the stakeholders are performing their activities in compliance with the required HS&E's laws, regulations and standards.
- Scrutinize that **all** the Project site's activities are being carried-out in a manner to avoid the risk of bodily harm to persons or risk of damage to any property.
- Prepare and submit the Project Site HS&E Evaluation Report with the list of all shortcomings and recommendations for their elimination for safe and secured operation of the Site.

Sister Organizations & Business Partners

To provide the best Quality Services to our valued Clients, we have established strategic alliances with a number of firms/companies of high reputation and prestige at the national and global level. Further, on case-to-case basis i.e., as per the project requirements, we carefully select the potential partners who shall venture with us to commence, execute and complete all type of projects of our domain. Some of our notable partners are:



www.obudagroup.com

Creativity Paths has its strategic Business Partnership Agreement with OBUDA Group (OBUDA) based in Budapest, Hungary. With OBUDA's extensive expertise and a track record of successfully completing numerous iconic projects spanning over 35 years, combined with Creativity Paths' twelve-year experience in Kingdom of Saudi Arabia (KSA), we are poised to offer design, engineering, project management, construction management and other services as outlined hereinbelow to our valued clients in KSA and the wider Gulf region. OBUDA has successfully completed more than 1,000 Projects and many of them are Iconic Projects in 15 countries worldwide. Currently, more than 250 Engineers are working – all Engineering fields are covered.



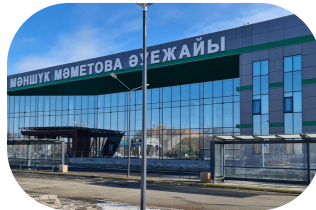


www.spdo.com.tr

Creativity Paths has Joint Venture (JV) Agreement with a leading firm, Sabri Paşayığıt Architects (SP Architects), Istanbul, Turkey. SP Architects has been continuing its works and producing large scale projects such as master plans, mixed use and urban transformations since 2005, has a large portfolio in different sectors such as residential, commercial, health and education. As one of the largest and renown architectural practices in Turkey, SP Architects are working within a BIM environment with a team of 150+ architects based at Istanbul Office. Thus, we are capable of Planning, any magnitude and complex project of Planning, Designing and Engineering Services of Airports, Hospitality, Commercial Buildings (Malls, Office Buildings, Hospitals, Schools, Warehouses, etc.), Mosques, etc. by taking into account all the Services requirements of the Clients.



Kaz Construction Group LLP (KCG) has achieved a status of a leading contractor in Kazakhstan and abroad to compete and deals in large-scale projects and sole objective to efficiently provide the international standard and state-of-the-art Construction Contracts and Operation & Maintenance (O&M) Services in the field of Oil & Gas, various type of Industrial Projects, all type of Civil Works (Residential Buildings, Commercial, Hospitality, High Rise Buildings, etc.), Infrastructure, including Electro-Mechanical & Plumbing (ME&P) in Kazakhstan and abroad. Over the period of 22 years from its inception in 2002, KCG successfully established as a high profile and international contractor. KCG is possessing comprehensive and absolute experience in all the fields as listed in the subsequent section of this Profile of Core Domains.



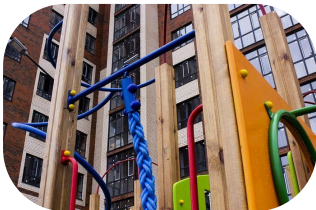
Senan Constructions (Senan) – Sister Organization is a Saudi Construction Company, founded in 2010 and since then it is involved in the development of large-scale Construction Projects in the field Construction of Civil Works, Infrastructure, Mechanical, Electrical and Plumbing (MEP), Heat Ventilation Air Condition (HVAC), Furnishing and Finishing. It has established itself as one of the progressive construction companies in Saudi Arabia. Senan has gained sufficient experience in the aforementioned activities and developed its resources in terms of adequately qualified and skilled workforce; thus, it is capable to undertake and efficiently complete the captioned works.



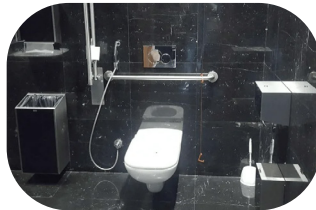
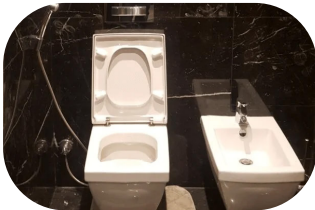
Tawsia Company Limited (Tawsia) - Sister Organization is a Saudi Company for internationally renowned brands that provide the largest variety of sanitary products. Tawsia has been in operation over Thirty (30) years in KSA. Our quality workmanship has earned us a reputation as one of the regions premiere trading companies. We specialize in all aspects of trading, particularly supply and installation of Furniture and Fixtures of sanitary products and door hardware mid & high-end projects.



Senan Construction of KSA and Kaz Construction Group LLP (KCG) of Kazakhstan have formed Kaz Construction Company Ltd. in 2025 to enter the Saudi Construction market with the mission to deal with large-scale projects and sole objective to efficiently provide the international standard and high state-of-the-art in Civil Construction Projects, Infrastructure, Roads & Bridges and Operation & Maintenance (O&M) Services in the field of Oil & Gas, various type of Industrial Projects. The Civil Works shall include Residential Buildings, Commercial, Hospitality, High Rise Buildings, Roads & Bridges and all Electro-Mechanical & Plumbing (ME&P) Works.



Joan Arabia Goods Wholesalers L.L.C. (Joan Arabia) is a United Arab Emirates (UAE) Company, it is a branch of Tawsia Trading Company (Tawsia), Riyadh, KSA and Tawsia, the sister organization of Creativity Paths is in operation over past thirty-two (32) years in the KSA. Joan Arabia is a solution for internationally renowned brands materials and to render high quality associated services to its valued customers. Joan Arabia shall supply a large variety of Building, Construction and Finishing Materials.



Creativity Paths Clients and List of the Prominent Projects Completed

The following are some of the prime Clients of Creativity Paths:



Ministry of Interior



Ministry of Defense (Air Force)



MINISTRY OF WATER & ELECTRICITY



National Water Company



CPV ARABIA



HOLY MAKKAH MUNICIPALITY



RIYADH REGION MUNICIPALITY



Charity Association in Riyadh



List on-going and completed Projects by Creativity Paths

The following are some of the notable projects that are in progress or successfully completed by Creativity Paths:

Project Description	Project Location	Scope of Services
Oversight and Investigation Authority Buildings	Hafar Al-Batin, Majma and Bisha	Engineering Services – Design of Electro-mechanical Works and Execution Drawings
King Abdullah International Gardens	Riyadh	Preparation of Operational Plans
King Faisal Medical City	Asir Province	Preparation of Operational Plans
Administrative Building – Saleh Al-Bairi	Makkah Al-Mukarramah	Engineering Services – Design of Electro-mechanical Works
Administrative Building – Ministry of Interior	Dammam	Satellite Images, Spatial Information and Digital Elevation Models
Create a Demographical Database – Ministry of Defense	Various	Engineering and Design Services (Architectural Designing, Electro-mechanical Works)
Al-Khoj Mosque	Makkah Al-Mukarramah	Engineering and Design Services (Architectural Designing, Electro-mechanical Works)
College of Science and Arts in Baljurashi – Al-Baha University	Al-Baha	Engineering Services – Design of Electro-mechanical Works
Carso Pasteur Hotel	Makkah Al-Mukarramah	Engineering Services – Design of Electro-mechanical Works
Palace of Culture	Al-Hasa	Engineering Services – Design of Electro-mechanical Works and Execution Drawings
Warehouse Building – Ministry of Interior	Makkah Al-Mukarramah	Engineering and Design Services (Architectural Designing, Electro-mechanical Works)
Building No. 7F8 – King Abdullah Higher Center	Riyadh	Engineering Services – Production of Shop Drawings for Electro-mechanical Works
Abdullah Bin Mubarak Al Mana Hotel – Accommodation for Pilgrims	Makkah Al-Mukarramah	Engineering Services – Design of Electro-mechanical Works and Execution Drawings
Palace of Culture	Al-Hasa	Engineering Services – Design of Electro-mechanical Works and Execution Drawings
Jizan General Hospital (500 Beds)	Jizan	Engineering Services – Design of Electro-mechanical Works and Execution Drawings
Centro Riyadh Olaya Hotel	Riyadh	Engineering Services – Design of Electro-mechanical Works and Execution Drawings
Labor Office Branch – Ministry of Labor	Khafji	Engineering Services – Reviewing of Design and Production of Execution Drawings
Alber Charity Association	Riyadh	Construction Supervision Services
235 Double Stories Villas Compound	Riyadh	Construction Supervision Services
Haras al-Hodoud Oncology Clinics – Ministry of Interior	Al-Azizia, Riyadh	Engineering Services – Design of Electro-mechanical Works and Execution Drawings
Maternity and Children Clinics for Border Guards – Ministry of Interior	Al-Azizia, Riyadh	Engineering Services – Design of Electro-mechanical Works and Execution Drawings
Expansion of Outpatient Clinics – King Fahad Hospital	Madina Al-Munawwara	Preparation of all Operational Plans
Maternity and Children Hospital in Jizan, with a capacity of (300) beds.	Jizan	Preparation of all Operational Plans
Mohammed Abdo Hotel – Accommodation for Pilgrims	Makkah Al-Mukarramah	Engineering Services – Designing of Electro-mechanical Works
System of Receiving Centers for Maintenance Requests for the Water Directorate	Al-Hasa	Engineering and Installation Services – Design and Installation of a System for Receiving Maintenance Request for Water and Sewage Networks
Turnkey Civil Project's Tender Documents for Aramak Real Estate Company.	Riyadh	Drafting of Tender Document
Core and Shell Tender Documents for Aramak Real Estate Company.	Riyadh	Drafting of Tender Document
Miscellaneous Contracts' Documents for Aramak Real Estate Company.	Riyadh	Drafting and Reviewing of various Contracts' Documents.
Headquarters Building for Al-Birr Charity Association	Riyadh	Construction Supervision Consultancy Services.
Maintenance and Renovation of Alyamama Building owned by Al-Birr Charity Association	Riyadh	Construction Supervision Consultancy Services.
Tower No.: 1 owned by CPV Arabia Company.	Riyadh	Construction Supervision Consultancy Services.
Tower No.: 2 owned by CPV Arabia Company.	Riyadh	Construction Supervision Consultancy Services.

Synopsis of Some of the Vital Ongoing and Completed Projects



Project Title:	Headquarters of Al-Bir Charity Organization.
Project Description :	The project consists of a building with 6 floors and 2 basement floors designated for car parking.
Client:	Al-Bir Charity Organization, Riyadh, KSA.
Scope of Services:	Construction Supervision.
Location:	Olaisha District, Riyadh, KSA.

Project Title:	Business Tower 1.
Project Description :	The project consists of a building with 32 floors and 6 basement floors designated for car parking.
Client:	CPV Arabia Company.
Scope of Services:	Construction Supervision.
Location:	Al-Murabba District, King Fahd Road, Riyadh, KSA.



Project Title:

Business Tower 2.

Project Description :

The project consists of a building with 8 floors and 4 basement floors designated for car parking.

Client:

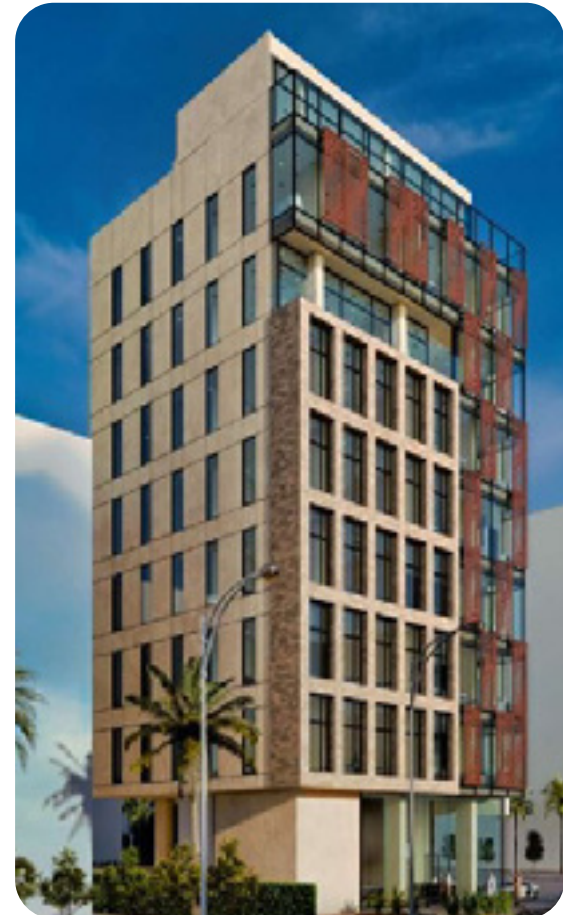
CPV Arabia Company.

Scope of Services:

Construction Supervision.

Location:

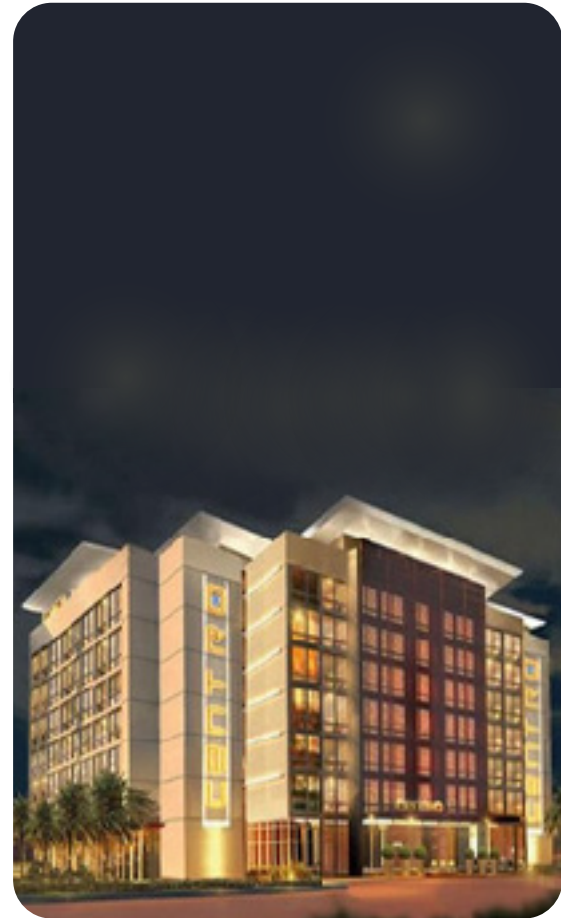
Al-Dhubbat District, Salahuddin
Al-Ayyubi Road, Riyadh, KSA.



Project Title:	Al-Murabba Tower.
Project Description :	The project is comprising of 10 floors building and 3 basements for car parking.
Client:	Tilal Al-Murraba Company (Real Estate).
Scope of Services:	Construction Supervision.
Location:	Al-Murabba District, Riyadh, KSA.



Project Title:	Centro Olaya Hotel.
Project Description:	It is a 4-Star Hotel and has 156 Rooms and Studios.
Scope of Services:	Technical Consultant (Review of all the Technical Documents and Preparation of Shop Drawings).
Location:	Al Olaya Road, Riyadh, KSA





Project Title:

King Abdullah International Gardens (KAIG).

Project Description:

The project covers an area of approximately 2 million square meters which includes:

A collection of open and covered botanical gardens. The project also features Several scientific gardens, including a flower garden, a bird garden, a physiotherapy garden, a geological garden, a butterfly garden, and a reptile garden, in addition to a number of restaurants, service and support buildings, and parking areas.

Client:

Municipality of Riyadh, KSA.

Scope of Services:

Technical Consultant (Review of all the Technical Documents and Preparation of Shop Drawings).



Project Title:	King Faisal Medical City (Phase 1).
Project Description :	It is a 1,350 beds hospital, which includes a Specialized Centers of Ophthalmology, Cardiology, Neuroscience, Oncology, Physical Therapy and Rehabilitation.
Client:	Ministry of Health (MoH).
Scope of Services:	Technical Consultant (Review of all the Technical Documents and Preparation of Shop Drawings)
Location:	Abha, Aseer Region.



Project Title:	Maternity and Children Hospital.
Project Description :	The Hospital has a capacity of 300 beds and is located on an area of 12,000 square meters. It consists of the main hospital building, support service buildings, a service tunnel, staff accommodation, and parking.
Client:	Ministry of Health (MoH).
Scope of Services:	Technical Consultant (Review of all the Technical Documents and Preparation of Shop Drawings).
Location:	Jizan



Project Title:	Marriott & Sheraton Hotels Aramak Infinity Hospitality Zone 2.
Project Description :	Drafting of two (2) Construction Contract's Tender Documents and other Contract related Documents and Review of the Tender Documents as a Third Party.
Client:	Aramak Real Estate, Riyadh, KSA.
Scope of Services:	Contract Management.
Location:	Anas Bin Malik Road, Riyadh, KSA.



Address:

**2241 King Abdullah Road, District of AlQuds - 13214
PO Box 12837, Riyadh - 13311,
Kingdom of Saudi Arabia**

Mobile: (+966) 56 500 3388,

Phone: (+966) 112489894

Email: info@cp-ksa.com

www.cp-ksa.com

رؤية
VISION
2030
المملكة العربية السعودية
KINGDOM OF SAUDI ARABIA